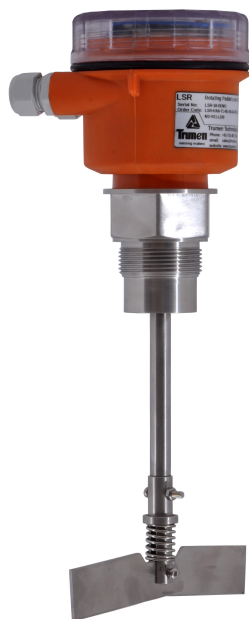
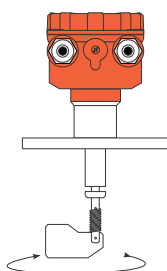




Rotating Paddle Level Switch for Solids & Powders

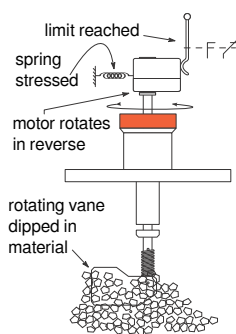
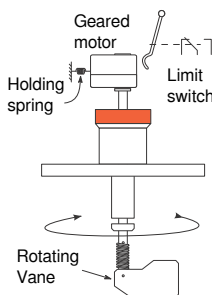


Operating Principle



Trumen rotating paddle level switches are spring loaded eccentrically driven rotating vanes or blades, which rotate at a slow rotational speed of 3rpm maximum, using a geared motor.

When material is absent, rotating vanes are free to move and motor is held to its normal position by a spring.



When material level reaches the rotating vanes, it tries to stop the rotation. This causes motor move in reverse as the spring can no longer hold it in its normal position.

When motor rotates to a sufficient degree, a limit switch gets triggered. This stops the power supply to the motor and another limit switch provides potential free output.

Applications

LSR is suitable for applications in free-flowing solid powders and granules, for example in cement industries, plastics, pharmaceuticals, chemicals and fertilizers, powder, food and breweries, etc.

Features

Rugged construction and design along with proper sealing to prevent dust penetration.

No calibration required.

Extensible length model available

Different types of blades (vanes) available.

Stable and reliable performance

Specifications

Supply (M2) 220V AC $\pm 10\%$, 50/60Hz
 Output Potential Free SPDT Limit Switch
 Rating 5 A each @ 24VDC or 220VAC

Supply (M1) 110V AC $\pm 10\%$, 50/60Hz
 Output Potential Free SPDT Limit Switch
 Rating 5 A each @ 24VDC or 220VAC

Supply (M3) 24V DC,
 Output SPDT Limit Switch
 Rating 6 A each @ 24VDC or 220VAC

Temperature: -20°C ... 80°C (-4°F ... 176 °F)
 Ambient -30°C ... 100°C (-22°F ... 212 °F)
 Process (extensions & heat sinks required)

Pressure atmospheric

Blade Material SS 316 or SS 316L

Process connections NPT / BSP 3/4", 1", 1 1/4", 1 1/2", 2" etc
 Flanged : ANSI/JIS/DIN/ASA/custom

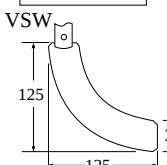
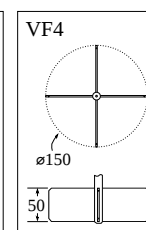
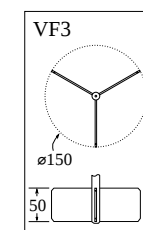
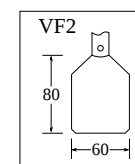
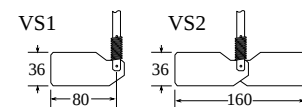
Paddle guide pipe material SS 304, SS 316, SS 316L

Max length 100mm to 2,000mm
 Blade 2mm

Thickness

Blade Types

Typical Dimensions



Magnetic Clutch

Various Process Connections

90° Angled Extensions

Custom Blades Available

No Calibration Required

Easy Installation

Order Code

- LSR Rotating Paddle type Point Level Switch
- Hxx Enclosure: HAN: Aluminum Non-Hazardous IP-66/68, HAX: Aluminum Flameproof IIa, IIb and IIc, HPN: Polycarbonate IP-66
- Tx Material Temperature (T1: max 80°C, T2: max 200°C, TS: Customer specified - Special designed)
- Rx Sensor rigid/flexible type, RD : Rigid Rod Sensor, RP : Flexible Rope Sensor, RS : Specially designed sensor
- Sx Blade Surface Material (S4: SS-304, S6: SS-316, SL: SS-316L, SP: Plastic [to be specified] Blades)
- Gx Sensor Extension Material (G4: SS-304, G6: SS-316, GL: SS-316-L)
- Px Process Connection Type (PFL: Flanged Type – description of flange – FL -at the end of order code) (PB3: 3/4", PB1: BSP 1", PB2: BSP 1 1/2", PB4: BSP 1 1/4", PB5: BSP 2") (PN3: 3/4", PN1: NPT 1", PN2: NPT 1 1/2", PN4: NPT 1 1/4", PN5: NPT 2") (PT1: Triclover/Triclamp 1 1/2", PT2: Triclover/Triclamp 2") (PCS: Special Process Connection)
- Cx Process Connection Material (C4: SS-304, C6: SS-316, CL: SS-316L)
- Mx Power supply type, M1 : 110V AC 50/60Hz, M2 : 220V AC 50/60Hz, M3 : 24V DC
- Vxx Vane Type (Paddle Type)
 VF2: Fixed two fin blade, VF3: Fixed 3 fin blade, VF4: Fixed 4 fin blade, VS1 : Single spring loaded blade, VS2: Double spring loaded blade, VSW: Single sword type blade, VSV: Specially designed blade
- Lxxxx Insertion length (100mm to 2000mm)
- FLxx Flange type and bore size specified for ASA/ANSI/JIS/DIN/Custom

Trumen Technologies Pvt. Ltd.

(an ISO 9001:2008 company)

39 Mangal Nagar, B/H Sai Ram Plaza, Nr. Rajiv Gandhi Circle, AB Road, Indore, MP, 452 001, India
 Phone: +91-731-497 2065
 email: sales@trumen.in web:www.trumen.in

